



THE

**SUFFOLK
SQUIRE**

19" POWER MOWING MACHINE

FOUR STROKE ENGINE

**OPERATING & MAINTENANCE
MANUAL**

Sales and Service Department :
SUFFOLK IRON FOUNDRY (1920) LTD.,
SUNNYHILL AVENUE,
DERBY,
ENGLAND.

Telephone Number : DERBY 21201 (10 lines)

Spares and Repairs Department :
SUFFOLK IRON FOUNDRY (1920) LTD.,
STOWMARKET,
SUFFOLK,
ENGLAND:

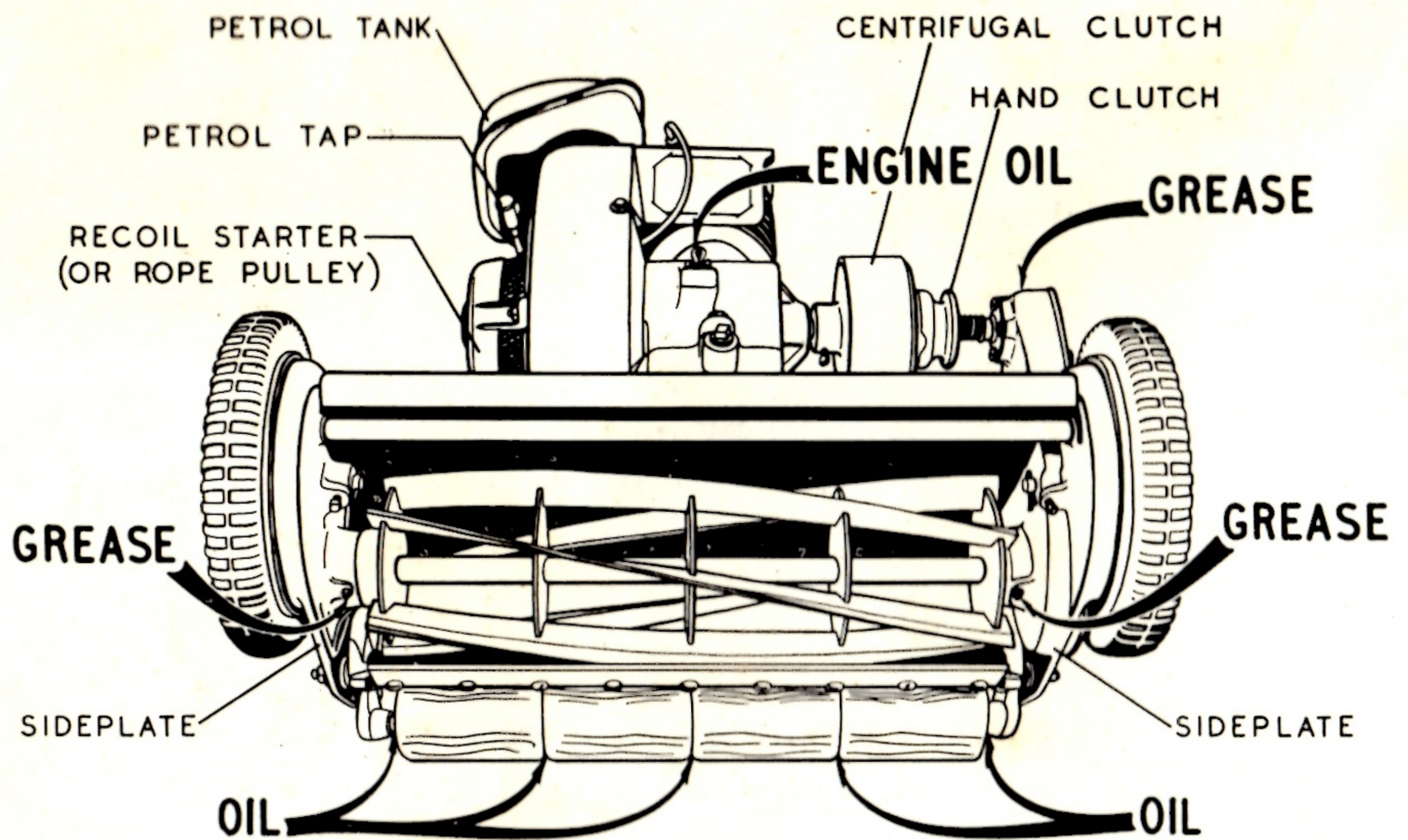
Telephone Number : STOWMARKET 2183

INSTRUCTIONS FOR ORDERING SPARE PARTS

It is essential to quote the following.

- (a) The Model Name of the machine.**
- (b) The chassis serial number stamped on the R.H. side plate. (*See mower assembly illustration*).**
- (c) The engine serial number. (*See engine assembly illustration*).**
- (d) The PART NO. of the part, NOT the illustration No.**

LUBRICATION and INSTRUCTION DIAGRAM



The Suffolk Squire Power Mowing Machine

INSTRUCTIONS

for the Operation and Maintenance

I. GENERAL ADVICE.

II. OPERATING INSTRUCTIONS.

1. Preparation for use.
2. Centrimatic.
3. To start engine when cold.
4. To start engine when hot.
5. Using the Mower.
6. Mowing Adjustments.
7. Some causes of Failure to start.

III. MAINTENANCE & REPAIRS.

1. Lubrication.
2. Chain.
3. Centrimatic.
4. Procedure for changing side and sprocket.
5. Engine.

I GENERAL ADVICE.

The Suffolk Squire Power Mowing Machine is sent out from the factory in perfect condition, and when received should be carefully examined to see that it has not been damaged in transit. Should any part of the machine be damaged in any way, your dealer should be advised at once.

Flush out petrol tank with a small quantity of petrol before filling for the first time.

Do not start the engine in your shed or garage unless the doors are open. Exhaust gases are poisonous.

Before starting, always check that there is petrol in the tank and sufficient oil in the crank case. Top up if necessary. Oil and grease working parts regularly, with the exception of the CENTRIMATIC.

Before mowing, make sure your lawn is quite free from stones, and other obstructions, i.e. pieces of bones, wood, etc., which might cause damage to the cutting cylinder.

If any obstacle should get caught, **NEVER ATTEMPT TO CLEAR OBSTACLE OR REVOLVE CYLINDER BY HAND WHILE ENGINE IS RUNNING.**

Never drive the machine over gravel paths without keeping the revolving cutting cylinder well clear of the ground.

The petrol tank should not be filled while the engine is running. Petrol spilling on a hot engine can be dangerous.

DO NOT MIX OIL WITH PETROL. The S.I.F engine is a 4-stroke type and is designed with separate oil lubrication. It is wise to filter your petrol through a fine wire gauze when filling the tank.

Do not race the engine. A speed of 3 miles per hour is recommended. At this speed the machine can mow half an acre per hour.

After use, always wipe blades with oily rag.

If your mower is going to be stored for any length of time, drain the engine completely of fuel to prevent gum deposit forming on essential parts. Remove sparking plug, pour a teaspoonful of engine oil into the cylinder, and turn the engine round slowly by hand to spread the oil. Replace the sparking plug.

II. OPERATING INSTRUCTIONS.

I. PREPARATION FOR USE.

(a) Fill the petrol tank with commercial petrol. The tank will hold 2 pints which is sufficient for 2 hours running under average working conditions.

DO NOT MIX ANY OIL WITH THE PETROL.

(b) Remove filler plug from the front of the engine and fill with half-pint of any one of the following recommended oils or equivalents. When filling, turn starting pulley slowly by hand to expel any air trapped in the sump, after first tilting the mower backwards slightly.

Do NOT use a new engine without first filling sump with oil.

See Engine Assembly illustration

RECOMMENDED LUBRICATING OILS.

Climate	Shell	B.P.	Castrol	Vacuum	Esso
Temperate	X-100 30	Energol SAE. 30	Castrol XL	Mobiloil A	Essolube 30
Tropical	X-100 40	Energol SAE. 40	Castrol XXL	Mobiloil AF	Essolube 40

(c) Lubricate all oil and grease points of the machine.

See Section III. Para. 1, Page 10

(d) Before fitting handle (1) remove the bolts, nuts and washers (2) from the sideplates (3). Fit the forks so that the bosses (4) on the sideplates pass through the upper of the two holes in the forks. Replace the bolts through the sideplates and through the lower holes in the forks. The heads of the bolts should be on the inside of the sideplates.

See illustration Page 6

Replace washers and nuts on the bolts but set the handles in the position most comfortable for your height before tightening the nuts.

(e) Fit the control lever to either bar of the handle. Fasten the cable to the handle by the steel clip.

(f) Set the position of the roller brackets (5) at the rear of the machine to give the desired height of cut by slackening bolts (6). Retighten bolts after setting. If the grass is long it is advisable to set for high cutting at first. Then lower machine to normal height required for season. It is important that the two brackets should be adjusted equally.

A second hole (7) is provided in each sideplate as an alternative position for the roller bracket bolts, thus providing an even greater range of variation of height of cut.

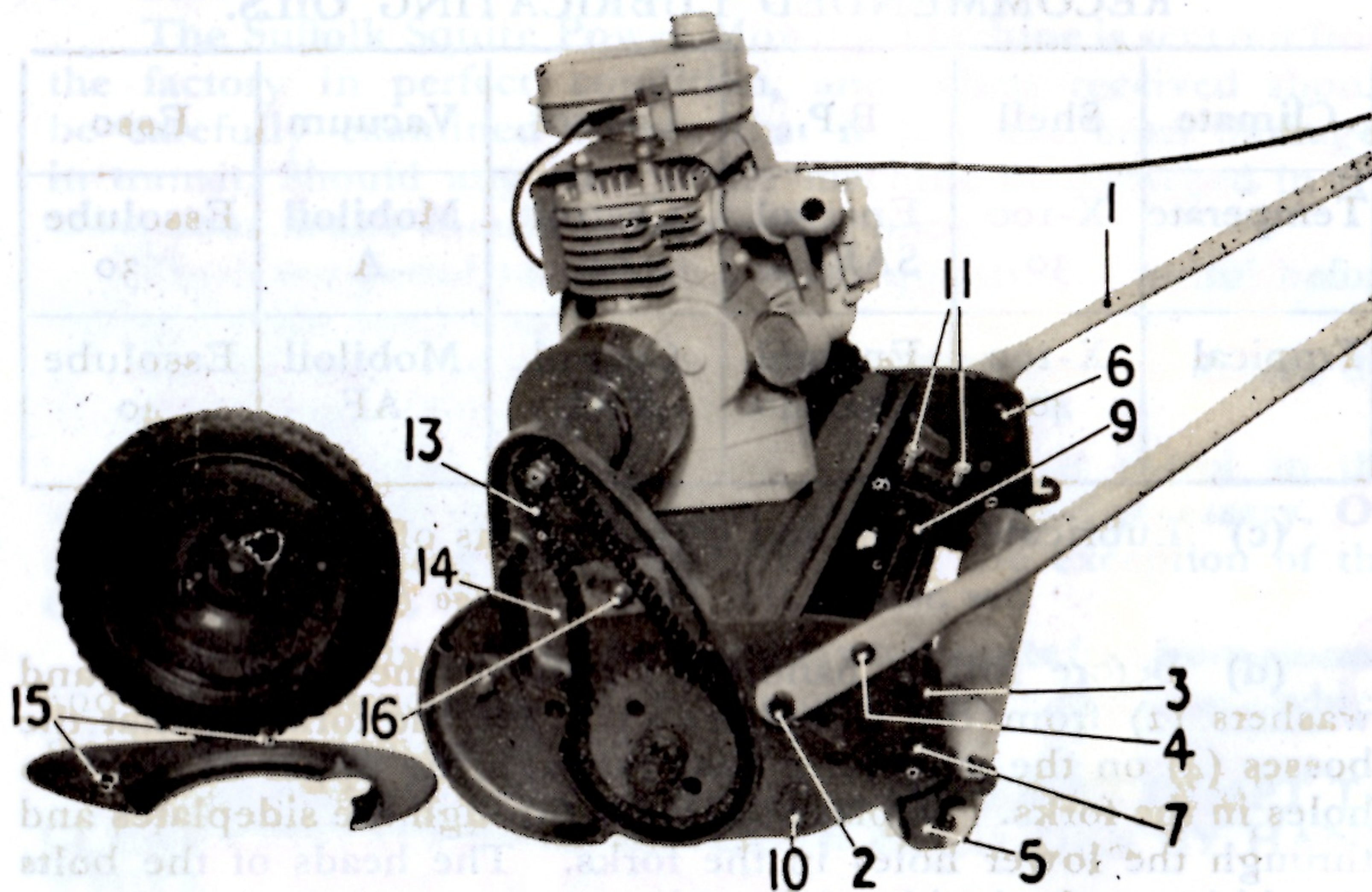
See illustration page 6

(g) Before starting the mower, spin the cutting cylinder to see that it runs freely. If during transit the adjustment has been displaced, perfect alignment can readily be restored by resetting the bottom blade.

See Section II. Para. 6 (b), Page 9

(h) To fit the Grasscatcher attach the bottom edge of the grasscatcher to the special hooks on the roller brackets.

Hang the wire hook of the Grasscatcher over the 'v' shaped fork of the handles, bending the hook to suit so that the base of the Grasscatcher is just clear of the ground when the handle is in the desired position.



II.

2. THE CENTRIMATIC.

The mower is driven by the engine through the SUFFOLK CENTRIMATIC transmission which incorporates three special features :

(a) An AUTOMATIC CENTRIFUGAL CLUTCH—which enables the machine to be controlled completely by a single lever.

(b) An OVERLOAD SAFETY DEVICE—which prevents damage to the machine should an obstacle be caught in the cutting cylinder.

(c) A MANUAL CLUTCH which allows the engine to be disconnected from the mower for starting and testing purposes.

The centrifugal clutch is housed within the drum (1).

The manual clutch consists of a sliding collar (2) which is kept in engagement with the drum by a spring (3). The collar engages internally with a pin (4) passing through the driving shaft (5).

See illustration Page 7.

BEFORE STARTING THE ENGINE, pull the collar about $\frac{1}{2}$ " along the driving shaft against the spring, and turn it anti-clockwise $\frac{1}{4}$ turn to hold it in position.

This will also disengage the collar from the pin in the driving shaft.

The centrifugal clutch cannot now drive the mower.

After starting the engine, **CLOSE THE CONTROL LEVER SO THAT THE ENGINE IS IDLING.**

Re-engage the manual clutch by rotating the collar and the drum simultaneously anticlockwise, keeping the teeth of the drum opposite the grooves in the collar. After about $\frac{1}{4}$ turn the collar will spring into re-engagement.

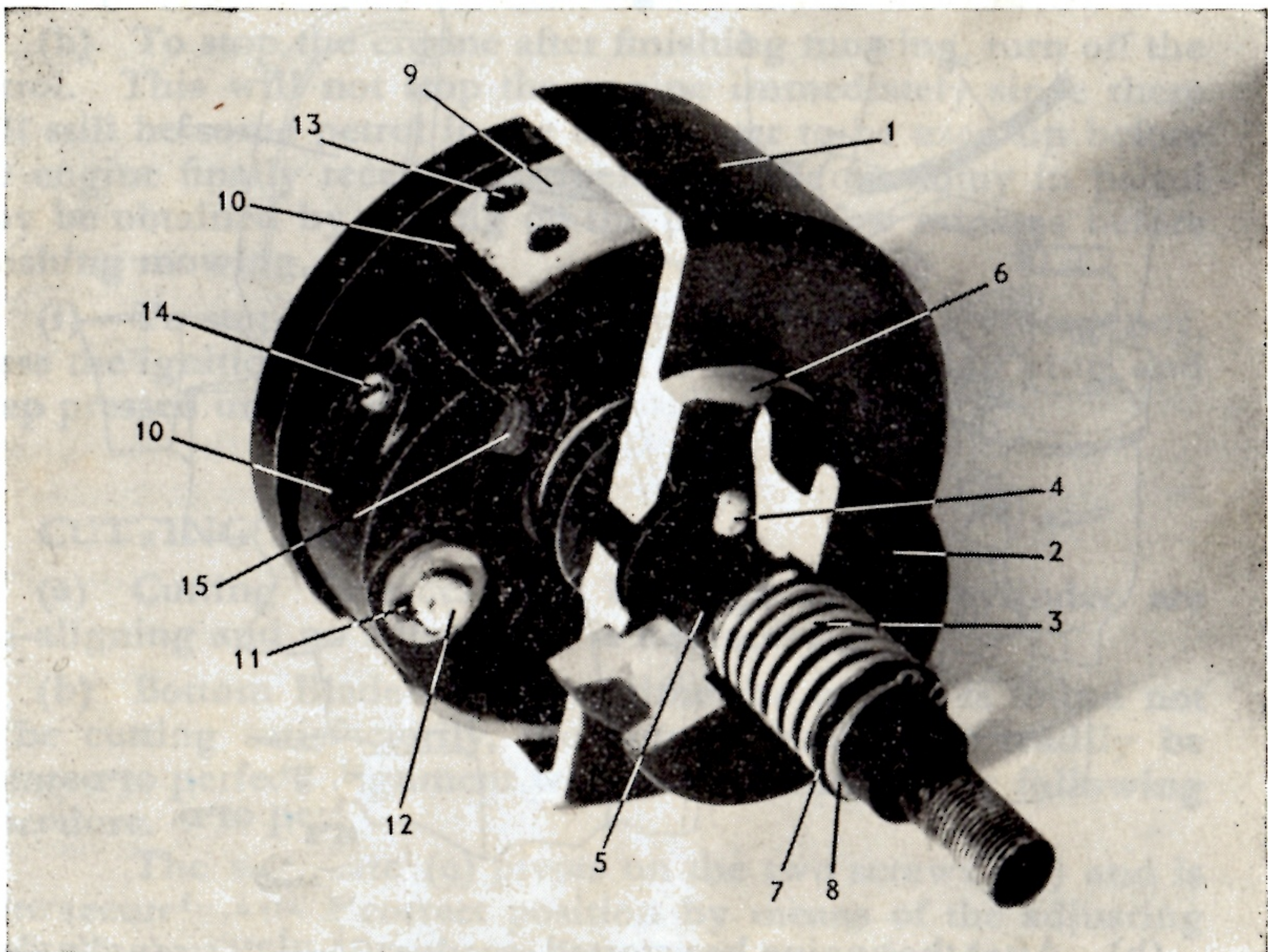
If during mowing, an obstacle be caught in the cutting cylinder, the safety device will immediately disconnect the engine from the mower by throwing the sliding collar out of engagement.

BEFORE ATTEMPTING TO CLEAR THE OBSTACLE, STOP THE ENGINE. After clearing, re-start the engine before re-engaging the sliding collar.

The spring (3) of the sliding collar is held in position by a washer (7) and a circlip (8) fitted in a groove on the driving shaft. An alternative groove is provided nearer to the collar so that the spring can be compressed further if the user desires to adjust the safety device for a greater overload.

DO NOT LUBRICATE ANY PART OF THE CENTRIMATIC.

See illustration below.



II.

3. TO START ENGINE WHEN COLD.

(a) Check that ignition cut out switch on top of engine is clear of sparking plug terminal.

(b) Pull manual clutch of the CENTRIMATIC out of engagement.

See Para. II 2, Page 6, and illustration Page 7.

(c) Turn on fuel by means of tap under tank. Tap control button should be pulled out gently.

(d) Close the air strangler by turning the small lever (1) at the side of the carburetter to horizontal position.

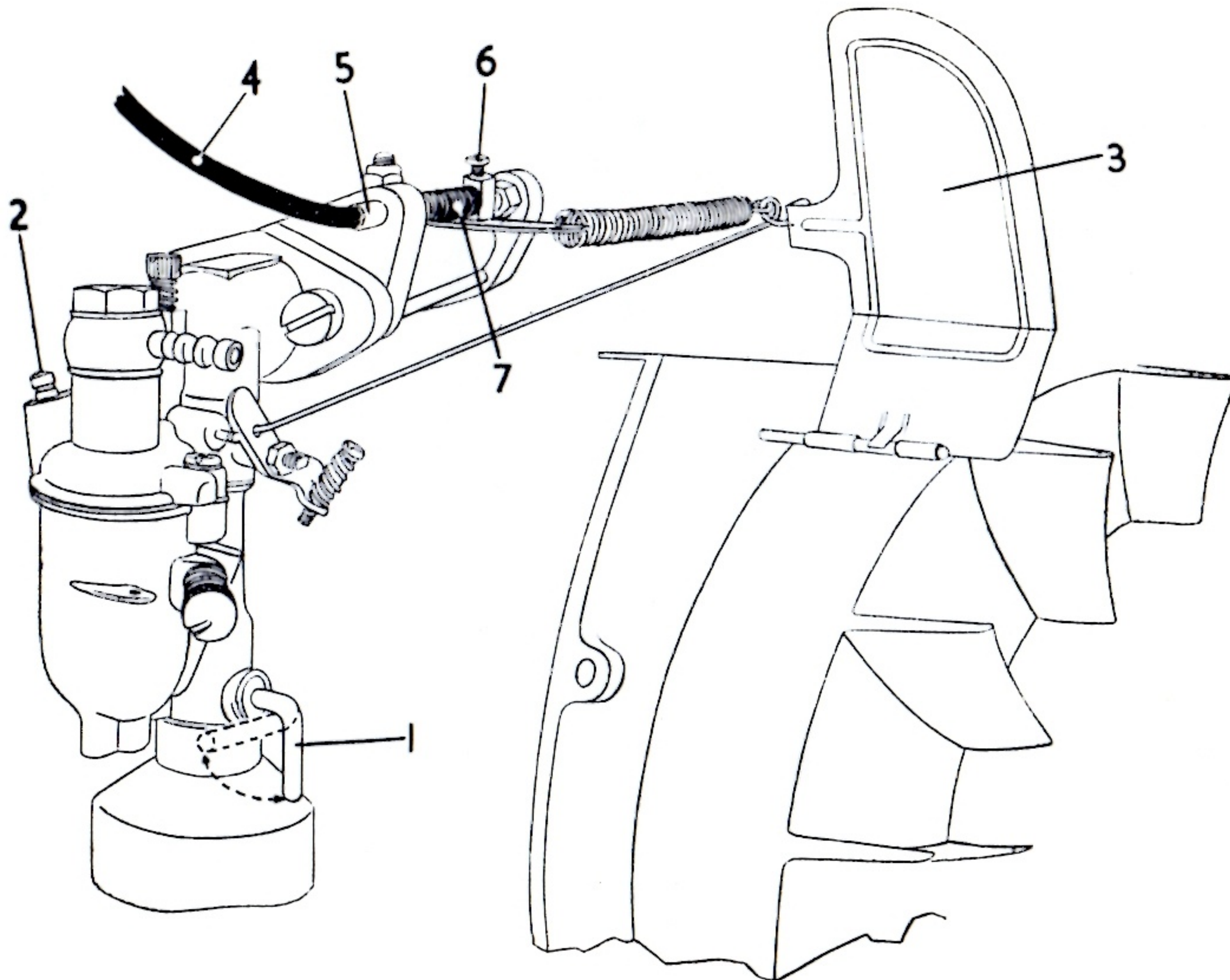
See illustration below

(e) Open control lever on handle-bar about one-third of its full opening.

(f) Press the tickler (2) on top of the carburetter float chamber until the petrol just commences to overflow.

See illustration below

(g) Fix the knot at the end of the starting cord into the slot in the pulley and wind the cord round the pulley in a clockwise direction, leaving just sufficient cord to grip securely. Grip wooden knob but do not wind the cord round the hand. Then pull upwards sharply when the cord will release automatically.



(h) After the engine has started, gradually open strangler as engine warms up. When engine is warm and running smoothly, partially close control lever so that engine is idling.

(i) When engine is idling, engage the manual clutch of the CENTRIMATIC. Machine will not move forward but is now ready for use.

II.

4. TO START ENGINE WHEN HOT.

The same procedure should be adopted except that it should not be necessary to close the strangler or to flood carburetter by pressing tickler.

II. USING THE MOWER.

5. The following procedure for using the machine should be adhered to :

(a) Ensure that cutting cylinder spins freely before starting engine.

(b) Allow engine to warm up before starting mowing.

(c) Engage manual clutch of CENTRIMATIC ONLY WHEN ENGINE IS IDLING.

(d) Open control lever smoothly, when the machine will automatically take up the drive and move forward.

(e) Do not race the engine. A speed of 3 m.p.h. is recommended.

(f) Reduce speed on corners by closing the lever slightly until you get used to the control of the machine.

(g) To stop the mower, close the control lever fully. This will stop the mower but not the engine.

(h) To stop the engine after finishing mowing, turn off the petrol. This will not stop the engine immediately since there will still be some petrol in the carburetter to be used up before the engine finally receives no fuel. A little economy in petrol may be obtained by turning off the petrol a few minutes before finishing mowing.

(i) To stop the engine quickly in event of an emergency, press the ignition cut out switch on to top of sparking plug, and keep pressed until engine stops.

II.

6. CUTTING ADJUSTMENTS.

(a) Cutting Cylinder—the bearings of the cylinder are self-aligning and no adjustment is necessary.

(b) Bottom Blade—if at any time the mower is found not to be cutting satisfactorily, the bottom blade may readily be restored to perfect alignment with the cylinder by the following procedure.

The soleplate (9) pivots on the two screws (10) and is held securely in its correct position by means of the adjusting screws (11) of which there are four—two on each side.

To lower the soleplate, thus bringing the bottom blade away from the cutting cylinder, loosen the rear pair of adjusting screws and tighten the front pair. To raise the bottom blade towards the cutting cylinder, loosen the front pair and tighten the rear pair.

When correctly adjusted, the cutting cylinder should just touch the bottom blade throughout its whole length.

It is of the utmost importance that all four adjusting screws are equally tight on the soleplate so that undue strain on the sideplate is avoided.

See illustration Page 6

(c) Height of Cut—the height of cut is regulated by the position of the roller brackets.

See Section II. Para 1 (f)

(d) Handles—

See Section II. Para. 1 (d)

II

7. FAILURE TO START.

If after a reasonable number of trials the engine should not start, this may be due to one or more of several causes, such as :

(a) Lack of petrol through tap not being turned on, fuel supply choked, or failure to flood the carburetter.

(b) Too much petrol through excessive flooding causing wet sparking plug. If so, remove and dry the plug, turn engine over smartly with control lever closed. Replace plug.

(c) Control lever open too wide. One quarter to one third is correct.

(d) Sparking plug dirty or gap between points incorrect. Clean or adjust if necessary. Gap should be .020 in.—.022 in.

(e) No spark. Remove plug and place plug body on top of cylinder with lead attached and turn starting pulley. There should be a spark at the points. If not, clean and adjust gap between points.

If, after all above items have been checked, the engine still will not start, a more detailed examination will be required.

See section on 'Engine.'

III. MAINTENANCE & REPAIRS.

I. LUBRICATION.

The following points should be greased regularly before use:

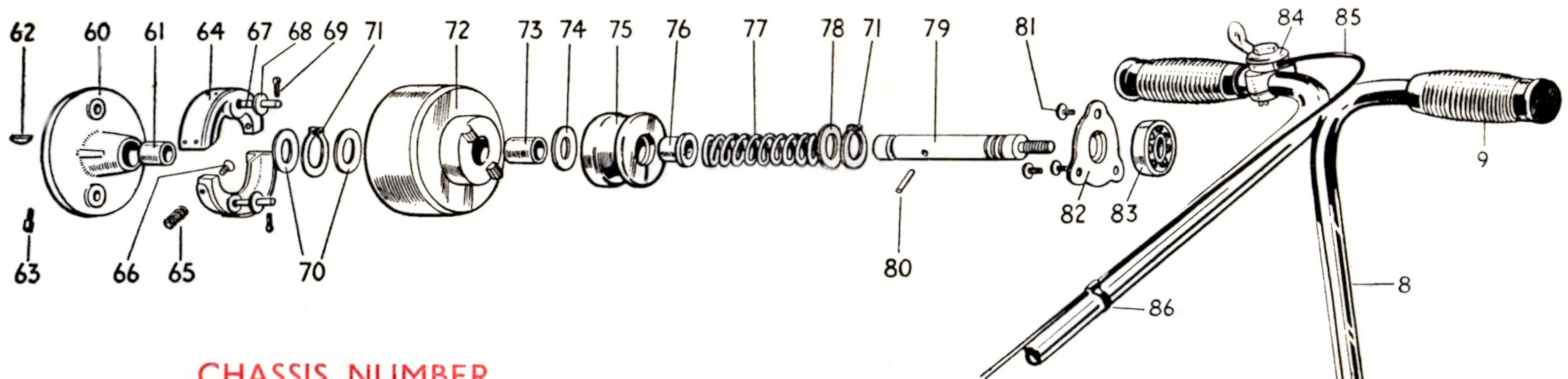
(a) The driving wheels through the nipples provided at their centres.

(b) The cylinder bearings through the nipples provided each end of the cylinder shaft.

(c) The bearing at the end of the driving shaft, by the nipple at the top of the chain case.

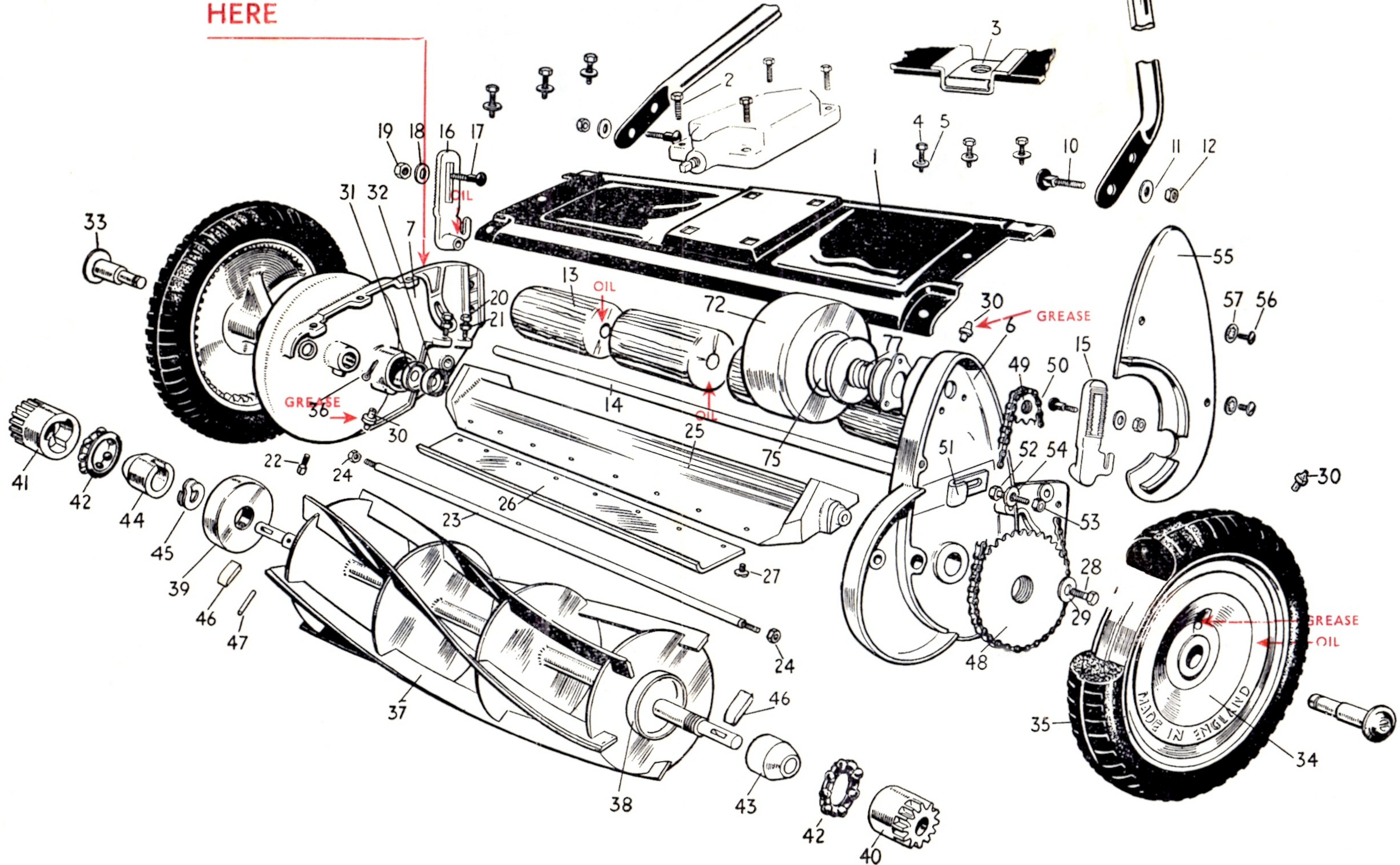
The following points should be oiled regularly with light machine oil :

Mower Assembly Illustration



CHASSIS NUMBER

HERE



(d) The driving pinions on each side of the mower. Lift one side of the machine well clear of the ground and turn the driving wheel round until its specially provided hole reveals the pinion within. The free-wheel and pinion can then be oiled through the hole. Repeat for the other wheel.

(e) The wooden land rollers.

In addition, always check that the sump of the engine is full, to the upper mark on the dipstick. Top up if necessary.

DO NOT LUBRICATE ANY PART OF THE CENTRIMATIC.

See illustration Page 2

2. CHAIN.

The cylinder driving chain (13) is packed with grease before leaving the works and should require no further lubrication.

The chain is fitted with a hook type adjuster (14) in order to take up any variations in chain wear.

To obtain access to the chain adjuster first remove the driving wheel next to the chain case by slackening the square-headed bolt which screws into the wheel bearing on the inside of the sideplate. Remove the split pin in the spindle. Then tap the spindle of the wheel outwards. Remove the two screws (15) on the outside of the chain case and withdraw the cover.

Slacken the nut (16) and move the adjuster to give the required tension on the chain. Retighten the nut. Check the tension in several different positions of the chain before re-assembling the mower.

See illustration Page 6

3. THE CENTRIMATIC.

i. Centrifugal Clutch.

Access to the centrifugal clutch of the CENTRIMATIC is readily obtained by removing the screws which fix the engine to the mower platform and withdrawing the engine.

If it is suspected that the clutch is not operating satisfactorily this may be due to one or more of the following causes :

(a) Oil or grease on the linings (9) of the clutch shoes (10) or on the inside of the clutch drum (1). Clean thoroughly with petrol or other degreasing agent.

(b) Clutch shoes unable to turn on pivot pins (12). Clean if necessary and free the obstruction.

(c) Linings of clutch shoes worn. This is not likely to occur except after very prolonged life. Remove shoes by withdrawing split pins (11) which secure the shoes to their pivot pins and fit new linings. Use new rivets (13).

(d) If, after attention to the foregoing points, the clutch is found still to be slipping, turn the spring adjusting screws (14) in an anticlockwise direction. This will allow the shoes to exert a greater pressure on the clutch drum.

After adjustment check that clutch is completely disengaged when engine is idling.

ii. **Safety Device & Hand Clutch.**

Should the safety device operate prematurely and disengage the manual clutch during normal mowing, check that there is no oil, grease or obstruction on the teeth of the drum or in the grooves of the collar. Check the spring.

See Illustration Page 7

4. PROCEDURE FOR CHANGING SIDE & REMOVING DRIVING SPROCKET.

1. Remove engine—see Para. III 3. i. P. 11.
2. Remove wheel, chain case cover and slacken chain adjuster. See Para. III 2. P. 11.
3. Remove chain.
4. Remove cylinder sprocket (48) by blocking cutting cylinder (37) with a wooden wedge and tapping sprocket in clockwise direction with a brass drift. If any difficulty is experienced, apply heat to sprocket.
5. Remove engine platform screws (4).
6. Remove soleplate screw (28) and tie rod nut (24).
7. Sideplate (6) can then be withdrawn together with clutch drum (72) and clutch spindle (79).
8. Remove clutch drum after first removing circlip (71) and washer (70).
9. Hold the spindle (79) in a vice and remove nut on outside of driving sprocket (49). Then withdraw driving sprocket.

See Mower Assembly illustration.

5. THE ENGINE.

A description of the engine together with instructions for maintenance will be found in a separate section towards the end of this booklet.

The Suffolk Four Stroke Engine

Type 75 G.14

Model No. 9C

DESCRIPTION & INSTRUCTIONS

for Operation and Maintenance

I. DESCRIPTION.

II. OPERATION INSTRUCTIONS.

1. Preparation for use.
2. Starting the engine when cold.
3. Starting the engine when hot.
4. Speed Regulation.
5. Lubrication.
6. Ignition.
7. Stopping the engine.
8. Some causes of failure to start.

III. MAINTENANCE & REPAIRS.

1. Magneto Description.
2. Magneto Service Instructions.
3. Carburetter Description.
4. Carburetter adjustments and maintenance.
5. Control Cable adjustments.
6. Engine dismantling.

I. DESCRIPTION.

Engine.	Petrol, four stroke, single cylinder, air cooled.
Cylinder Dimensions.	Bore, 50.8 millimetres. Stroke, 38.1 millimetres. Cubic Capacity, 75 c.c.
Max. H.P.	1.0 at 3,000 revolutions per minute.
Valves.	Mushroom. Side valve.
Valve Clearances.	Exhaust .015 inches. Inlet .007 inches. Inlet valve opens 2 degrees after Top Dead Centre. With above valve clearances the correct opening and closing of the valves will follow.
Camshaft.	One piece helical gear driven.
Piston.	Material, low expansion aluminium alloy. 1 Compression Ring, 1 Scraper Ring, 1 Oil Control Ring. Gudgeon Pin fixing by 2 circlips.
Connecting Rod.	Material, aluminium alloy. Big end bearing, plain and direct on crankshaft.
Crankshaft.	Material, Steel Forging. Dia. of take off—.75 in.
Main Bearings.	Steel backed white metal lined.
Ignition.	MAGNETO, FLYWHEEL TYPE. TIMING, 22—24 degrees before top dead centre. DRIVE direct main shaft. SPARKING PLUG, size 14 mm. 3/8 in. reach LODGE C.A.N. or equivalent. Three-eighths inch reach.
Carburetter.	Zenith 13TCA.
Lubrication System.	Special 'Oil-mist' method.
Fuel Tank Capacity.	2 pints.
Fuel Consumption.	.8 pints per H.P. hour.
Rotation.	Clockwise, looking at starting pulley.
Method of fixing.	By four bolts 5/16 in. dia. in base at 6 3/8 in. by 3 1/8 in. centres.

II. OPERATION INSTRUCTIONS.

1. PREPARATION FOR USE.

See Para. II 1, Page 4

2. TO START ENGINE WHEN COLD.

See Para. II 3, Page 7

3. TO START ENGINE WHEN HOT.

See Para. II 4, Page 9

4. SPEED REGULATION.

The speed of the engine is controlled by the lever at the end of the cable attached to the carburetter.

An automatic governor (3) is fitted which will maintain a constant speed whether the engine is running light or under load, according to the setting of the control lever. Adjustment to this device should not be attempted unless absolutely necessary.

See Illustration on Page 8

5. LUBRICATION.

Complete lubrication of all working parts of the engine including valves, etc., is automatically ensured by the special 'oil-mist' method, whereby it is unnecessary to add upper cylinder lubricant.

The crank case should always be kept full of oil, to the upper mark on the dipstick.

Do not remove the oil plug whilst the engine is running.

After every 30 hours running and preferably when the engine is hot, drain the oil by unscrewing the plug in the sump at the base of the engine. Flush out with flushing oil (not paraffin). Make sure drain plug is replaced and tightened before refilling with fresh lubricating oil.

6. IGNITION.

Ignition is fixed. If the magneto is removed for any reason, mark the relative position of engine and magneto in order that the timing should not be altered.

The magneto is timed to spark at 22 degrees before top dead centre.

7. TO STOP ENGINE.

Turn off petrol. This will not stop engine at once since there will still be some petrol in the carburetter to be used before the engine finally receives no fuel. A little economy in petrol may be obtained by turning off the petrol a few minutes before requiring engine to stop.

To stop the engine quickly in the event of an emergency, press the Ignition Cut-out Switch on to the top of the Sparking Plug and keep pressed until the engine stops.

8. FAILURE TO START.

If after a reasonable number of trials the engine should not start, this may be due to one or more of several causes, such as :

(a) Lack of petrol through tap not being turned on or fuel supply choked, or failure to flood carburetter.

(b) Too much petrol through excessive flooding, causing too rich a mixture and wet sparking plug. If so, remove and dry plug. Turn engine over smartly a few times by hand with control lever closed. This will expel excessive petrol vapour. Replace plug.

(c) Control lever open too wide. One quarter to one third is correct.

(d) Poor spark arising from dirty plug. Remove and clean plug and adjust points. Gap should be .020 in.—.022 in.

(e) No spark. Remove plug and place plug body on top of cylinder with cable attached and turn starting pulley smartly. There should be a spark at the points of the plug. If not, clean and adjust gap between points. Also check that plug cable is in good condition.

(f) Lack of petrol can sometimes result from dirty filter at junction of petrol pipe and carburetter. Remove plug No. 1 (*see Illustration on Page 25*) at top of float chamber, lift out filter gauze carefully and wash in petrol. Replace filter gauze and screw back union. Do not overtighten.

Make sure that fibre washers are replaced correctly.

If after all above items have been checked, the engine still will not start, the following examination will be required :

(g) Carburetter.

If it is suspected that foreign matter may have entered carburetter, remove screws from lid of float chamber and remove float. Then clean out float chamber and needle seat.

For more detailed instructions, see section on Carburetter Maintenance.

(h) Magneto.

If after examining sparking plug and its cable, there is still no spark, remove the flywheel cover and check magneto.

See section on Magneto Service Instructions.

(j) Cylinder Compression.

Lack of compression may be caused by

(i) Insufficient valve clearance. There should be a clearance of .015 in. between exhaust valve stem and cam and .007 in. between inlet valve stem and cam throughout the closed period of the valves respectively.

(ii) Valves sticking. Remove valve chest cover to see if valve stems are moving their full distance as engine is turned over.

If not, remove cylinder head, clean away any foreign matter under valve head on valve stem and free the valve.

(iii) Joint between cylinder and head of cylinder not tight. This is not likely to occur unless the cylinder head has been removed and replaced incorrectly, or replaced with a faulty gasket.

III. MAINTENANCE & REPAIRS.

1. MAGNETO DESCRIPTION.

The Flywheel Magneto produces a high spark output at low speeds for easy starting, and maintains a maximum spark output over a wide timing range.

It consists of two main parts : a FLYWHEEL and a STATOR PLATE. The Flywheel contains in its rim a permanent magnet of special alloy.

The Stator Plate contains the H.T. Coil mounted on a laminated core, the condenser and the breaker mechanism, all of which are easily accessible.

2. MAGNETO SERVICE INSTRUCTIONS.

If the engine fails to start, and there is indication that the magneto is at fault, the following procedure should be adopted.

(a) Disconnect the H.T. lead from the spark plug, and hold it about $\frac{1}{4}$ " away from some unpainted portion of the engine. Turn the engine over smartly and a spark should jump this gap.

If no spark is visible, then

(b) Remove the magneto cowling by unscrewing the cowling fixing screws, and withdrawing the cowling complete with petrol tank, after first disconnecting the petrol pipe from the carburetter.

(c) Remove the flywheel. Unscrew the hexagon nut (L.H. thread) at the end of the crankshaft and draw off the starting pulley. If the Flywheel will not withdraw easily, grasp it firmly and while attempting to pull it off,

tap the end of the crankshaft with a mallet. Be careful not to damage the thread. Make sure that there are no metallic particles inside the flywheel.

(d) Check that the H.T. cable is not broken, disconnected from the coil, or damaged in any way. Also check other wiring.

(e) Check that the contact breaker points are clean.

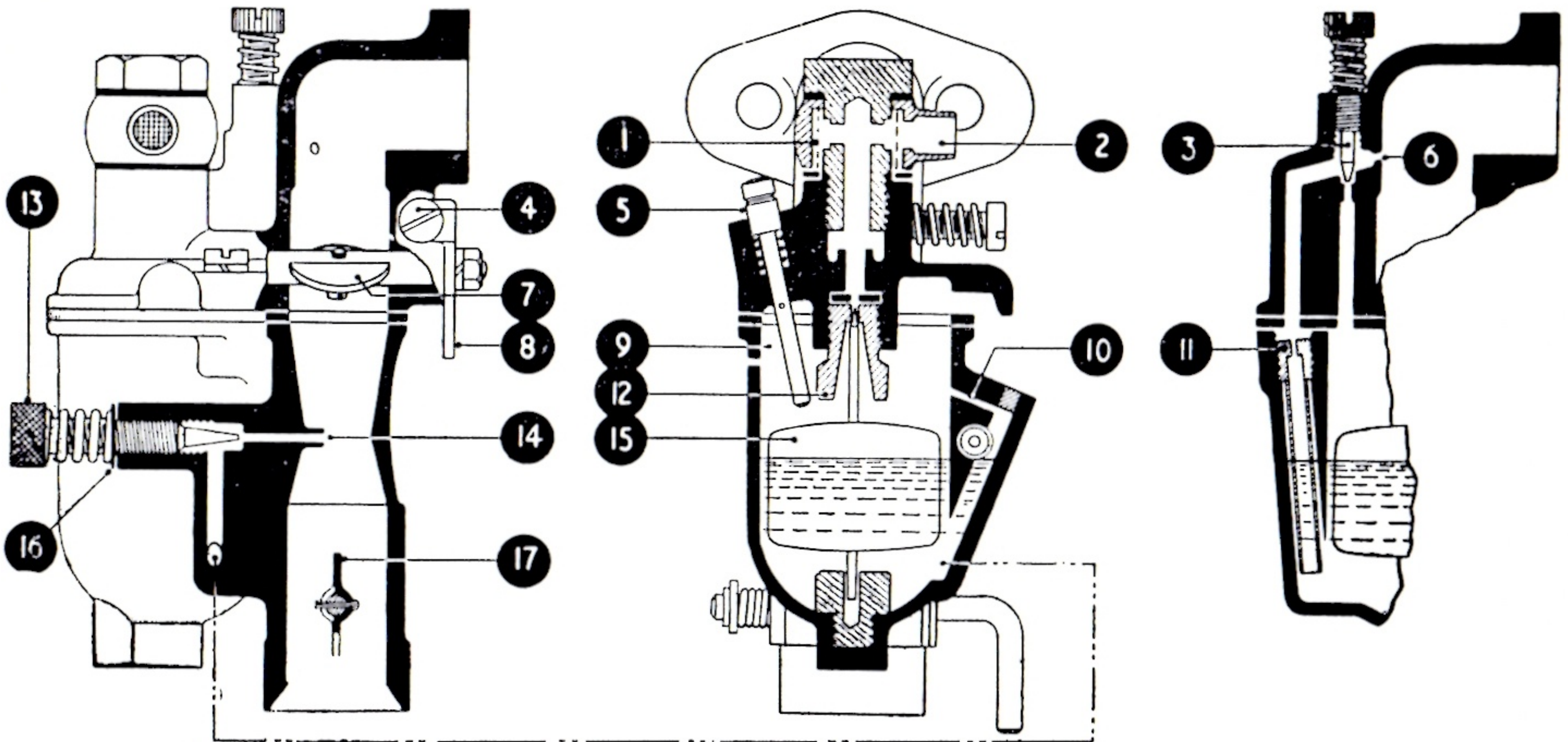
Turn the engine over until the points are fully open. Measure the opening with a feeler gauge. This opening should be .018"—.020". If the points need adjusting, loosen the large screw which locks the breaker plate and move the latter to give the correct opening by turning the small screw, which is eccentric. Then lock the large screw. Check the opening.

The breaker points setting should only be adjusted in the manner described; at no time should the fixed contact be loosened to provide adjustment.

If either the fixed or moving points at any time need replacement, it is recommended that both be replaced at the same time.

(f) A weak or faulty condenser can be detected by badly burnt or pitted points, or a continuous blue spark across the contacts when running. A small white spark is normal. The condenser can be removed by undoing the screws holding the clamp and disconnecting the leads from it.

3. CARBURETTER DESCRIPTION.



The 13TCA carburettor shown above has a high non-flooding angle in all directions, and consists of two principal castings. The upper portion or throttle body incorporates the right angle inlet bend and the fixing flange which is bolted directly on to the inlet port of cylinder: the lower portion consists of the float chamber (or bowl) and the air intake. The choke tube is cast integrally as part of the air intake.

Fuel Supply and Metering System.

Fuel entering the petrol banjo (2) is filtered by the gauze screen (1) and passes through the needle seating (12) into the bowl (9). The combined float and needle (15) will rise and close the seating, cutting off further supplies of petrol when the correct level is reached in the bowl (it is not intended that this level should be altered). A tickler or flooder (5) is provided to enable the float to be depressed, and as a result the fuel level will be raised in order to assist starting when cold. A small overflow hole in the bowl above the normal fuel level prevents excessive flooding.

High Speed Operation

Fuel metering at high engine speed is controlled by an adjustable main jet. The outlet of the main jet discharge tube (14) is placed at the restricted portion of the choke tube which forms part of the bowl. The main jet adjusting screw (13) has a tapered end which enters the tube (14), thus controlling

the quantity of fuel passing into the choke tube. The volume of petrol/air mixture passing into the engine is controlled by the butterfly throttle (7) which in turn is operated by the throttle lever (8). A small air-bleed hole (10) is provided in the main jet system : air from the bowl is used for this purpose.

Idle Operation.

The slow running channel carries petrol from the combined jet and dip tube (11) to the small idling hole (6) on the engine side of the throttle. Air for slow running is taken from inside the carburetter, and is controlled by the slow running jet adjusting screw (3). Turning this screw clockwise enriches the slow running mixture and vice versa.

Easy Starting.

This is ensured by the air strangler or choke (17) and during very cold weather the tickler (5) can also be used. When the engine has been switched off a short period it is not usually necessary to use the choke when restarting : it may, however, be an advantage to use the tickler in order to ensure an immediate fire when the engine is turned over.

4. CARBURETTER ADJUSTMENTS AND MAINTENANCE.

Adjusting Main Jet.

The main jet adjustment (13) is set by the engine manufacturer and should not be altered without good reason. This adjustment is always somewhat sensitive on small engines, consequently it should not be altered more than one-eighth of a complete turn until the effect of any such adjustment has been carefully noted. (The shallow notch in the head is provided only to indicate the position of the screw). Always make this adjustment with the engine under load at normal full speed with the throttle wide open. It is not satisfactory to adjust the main jet when the engine is running light on the speed governor with the throttle nearly closed. Turning the screw (13) clockwise, will reduce the fuel flow and weaken the mixture supplied to the engine. Turning it anti-clockwise will increase the flow and provide a richer mixture. **DO NOT FORCE THE SCREW INTO ITS SEATING AS THIS WILL DAMAGE THE TAPER** thereby making correct adjustment extremely difficult. If the setting is too weak it will result in lack of power and possibly overheating of the cylinder, together with poor pick-up or cutting out when the load is applied. Do not attempt to operate on a very lean mixture, as better performance and fuel economy will be obtained if the mixture is set for full power. An excessively rich mixture will produce black smoke from the exhaust and may cause rapid carbon formation in the cylinder head and on the piston crown. Carbon will also quickly form on the sparking plug points, resulting in difficult starting. The washer (16) prevents fuel leaking from the head of the screw. The main jet screw (13) should be set at about $1\frac{1}{8}$ complete turns in an anti-clockwise direction from the fully closed position.

Adjusting Idle Speed.

The throttle stop screw (4) should be turned clockwise to increase the idle speed. Conversely, turning anti-clockwise will reduce the speed at which the engine runs with the throttle in the closed position. It is usual to set the idling speed at 1000-1100 r.p.m. Smooth idling is ensured by regulating the slow running jet adjusting screw (3). In case of difficulty in obtaining satisfactory idling, make quite sure the gasket between the bowl and the barrel is in good condition and that the attachment flange on the barrel portion is perfectly flat. A thin gasket should always be used at this flange joint. The slow running jet adjusting screw (3) should be set about $\frac{1}{4}$ of a complete turn in anti-clockwise direction from the fully closed position.

General.

Flooding may be caused by excessive engine vibration, dirt in the needle seating, a bent float needle, or possibly by the tickler (5) sticking down and depressing the float. Should the flooding continue after cleaning and checking the carburetter, the next step is to fit a new float and needle (15) and needle seating (12) as this part is subject to wear as a result of engine vibration. Periodically check and clean the filter gauze in the banjo fixing the petrol pipe to the carburetter. It is not intended that the petrol level should be altered.

IMPORTANT. In all cases of bad starting or unsatisfactory performance, first check the setting of the **MAIN JET SCREW (13)** and **SLOW RUNNING JET ADJUSTING SCREW (3)**.

See Illustration on Page 17

5. CONTROL CABLE ADJUSTMENT.

The control lever is connected to the carburetter by the cable (4) which is located in the carburetter manifold by the ferrule (5). If after considerable use it is found that the cable has stretched, adjustment can be made by loosening the anchor screw (6) pulling the cable through the hole in the anchor and retightening the screw. This adjustment should be made with the control lever in the closed position and the throttle control spring (7) fully expanded.

See Illustration on Page 8

6. ENGINE DISMANTLING.

1. Disconnect plug lead from sparking plug.
2. Remove sparking plug.
3. Disconnect petrol banjo from top of carburetter float chamber.
4. Remove cowl complete with petrol tank and starter.
5. Remove governor blade from spindle and disconnect from throttle link.
6. Remove carburettor assembly at joint between inlet manifold and cylinder block.
7. Remove magneto flywheel, woodruff key, contact breaker cam, and cam spring.
8. Remove cylinder head.
9. Remove magneto stator plate, drawing plug lead through rubber grommet in magneto backplate.
10. Remove engine sump.
11. Remove big end setscrews, locking strip, oil splasher, and big end bearing cap.
12. Remove piston and connecting rod complete by drawing upwards through cylinder.
13. Remove rings from piston, one circlip and gudgeon pin.
14. Remove magneto backplate.
15. Remove crankshaft.
16. Remove valve chest cover, breather retaining spring and crankcase breather.
17. Compress valve springs and remove cotter pins.
18. Remove camshaft by tapping out camshaft spindle **TOWARDS** magneto end of engine with a brass drift.
19. Remove tappets.

TO RE-ASSEMBLE, REVERSE THE ABOVE PROCEDURE.

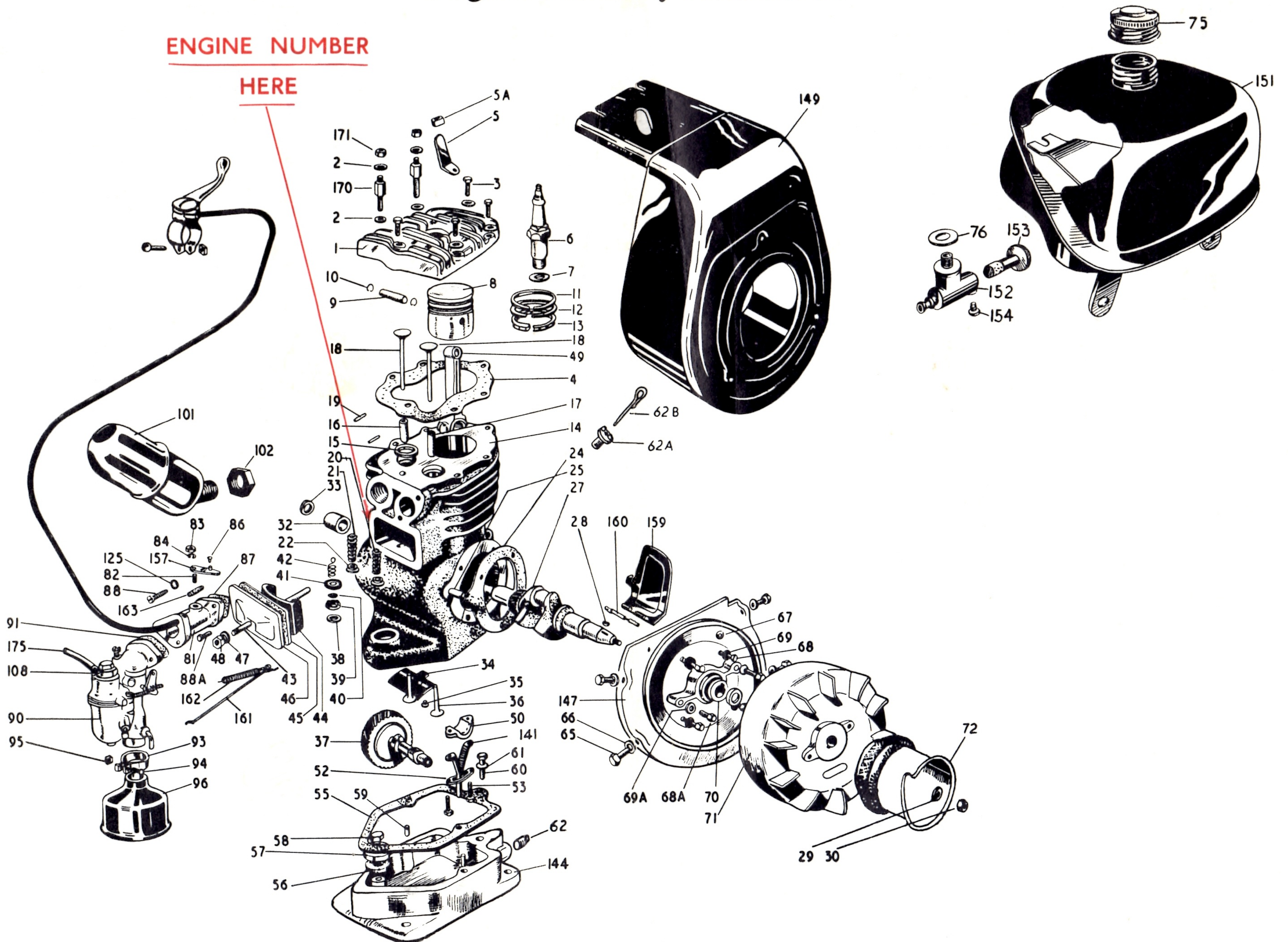
SUFFOLK SQUIRE POWER MOWING MACHINE SPARE PARTS LIST

Ref. No.	Description	Part No.	No. per. set.
FRAME ASSEMBLY			
1.	Engine Platform	L.3924	1
2.	Engine Fixing Screws	1D086A	4
3.	Spire Grip Nuts	L.6960	4
4.	Screw for fixing Engine Platform ...	1K039A	6
5.	Washer for fixing Engine Platform ...	L.3843	6
6.	Sideplate L.H.	L.3911	1
7.	Sideplate R.H.	L.3912	1
8.	Tubular Handle	L.3942	1
9.	Handle Grip	L.3933	2
10.	Bolt for Tubular Handle	1M850A	2
11.	Washer for Tubular Handle	1N625	2
12.	Nut for Tubular Handle	1N46A	2
13.	Wood Roller	L.3931	4
14.	Wood Roller Spindle	L.3923	1
14a	Split Cotter Pin (not illustrated) ...	L.4085	1
15.	Roller Bracket L.H.	L.4745	1
16.	Roller Bracket R.H.	L.4746	1
17.	Bolts for Roller Bracket	1M850A	2
18.	Washer for Roller Bracket	1N625	2
19.	Nut for Roller Bracket	1N46A	2
20.	Screw for Soleplate	L.4321	4
21.	Locknut for Soleplate	4N84A	4
22.	Screw for Wheel Pin	L.4645	2
23.	Tie Rod	L.3921	1
24.	Nut for Tie Rod	L.6956	2
25.	Soleplate	L.3913	1
26.	Bottom Blade—Lipped	L.3938	1
27.	Screw for Bottom Blade	L.4668	8
28.	Screw for Soleplate	1D086A	2
29.	Washer for Soleplate	L.6084	2
30.	Grease Nipple	L.3989	5
31.	Cup	L.3922	2
32.	Oil Seal Sub. Assembly	L.3925	2
33.	Wheel Pin Sub. Assembly	L.4650	2
34.	Driving Wheel	L.3932	2
35.	Rubber Tyre	L.2399	2
36.	Split Cotter Pin	L.4651	2
CYLINDER ASSEMBLY			
37.	Cylinder Sub. Assembly	L.3934	1
38.	Shroud, Short (L.H.)	L.4008	1
39.	Shroud, Long (R.H.)	L.4009	1
40.	Pinion L.H.	L.180	1
41.	Pinion R.H....	L.131	1
42.	Ball Retainer	L.3957	2
43.	Cone, Fixed, L.H.	L.3928	1
44.	Cone, Free, R.H.	L.3927	1
45.	Thackeray Washer for Cone, R.H. ...	L.4064	1
46.	Pawl, Rectangular	L.378	2
47.	Mills Pin	L.4131	1
CHAIN ASSEMBLY			
48.	Sprocket, 36 teeth	L.3939	1
49.	9-Tooth Driving Sprocket	L.4701	1
50.	Chain, complete with Con. Link ...	L.3961	1
51.	Chain Adjuster	L.4025	1
52.	Screw for Chain Adjuster	1D324A	1
53.	Nut for Chain Adjuster	1N46A	1
54.	Washer for Chain Adjuster	1N562A	1
55.	Chain-case Cover	L.3920	1
56.	Screw for Chain-case Cover	1K038A	2
57.	Washer for Chain-case Cover	L.3844	2

Engine Assembly Illustration

ENGINE NUMBER

HERE



Ref. No.	Description	Part No.	No. per. set.
CENTRIMATIC ASSEMBLY			
60.	Clutch Backplate	L.3918	1
61.	Bush for Backplate	L.3958	1
62.	Woodruff Key for Clutch Backplate	L.3845	1
63.	Screw for Clutch Backplate	L.3846	1
64.	Clutch Shoe Sub. Assembly	L.5319	2
65.	Clutch Spring	L.3756	2
66.	Screw for Clutch Shoes	L.4037	2
67.	Mills Pin	L.3725	2
68.	Washer for Clutch Backplate	1N562A	2
69.	Split Pin for Clutch Backplate	L.3847	2
70.	Clutch Thrust Washer	L.3953	2
71.	Circlip for Clutch Spindle	L.4063	2
72.	Clutch Drum	L.3919	1
73.	Bush for Drum	L.3959	1
74.	Thrust Washer for Clutch	L.4054	1
75.	Sliding Dog	L.3929	1
76.	Bush for Sliding Dog	L.4053	1
77.	Spring for Sliding Dog	L.3999	1
78.	Thrust Washer	L.3954	1
79.	Clutch Spindle	L.4716	1
79a.	Nut for 9-tooth Sprocket (not illustrated)	L.2946	1
80.	Mills Pin	L.4426	1
81.	Screw for Bearing Cover	L.4668	3
82.	Bearing Cover	L.3926	1
83.	Clutch Shaft Bearing	L.3730	1
84.	Control Lever	E.6947	1
85.	Cable	E.4132	1
86.	Cable Clip	E.6015	1
87.	Grass Catcher (not illustrated)	L.4640	1

The above list to be read in conjunction with
MOWER ASSEMBLY ILLUSTRATION

INSTRUCTIONS FOR ORDERING SPARE PARTS

It is essential to quote the following :

- (a) The Model Name of the machine.
- (b) The chassis serial number stamped on the R.H. side plate. (*See mower assembly illustration*).
- (c) The engine serial number (*See Engine Assembly Illustration*).
- (d) The **PART NO.** of the part, **NOT** the illustration No.

ENGINE SPARE PARTS LIST.

MODEL No. 75 G 14—9C

Ref. No.	Description	Part No.	No. per set
1	Cylinder Head	E.5926	1
2	Washer for Cylinder Head	3N561A	8
3	Set-Screws for Cylinder Head	5D336R	4
4	Cylinder Head Gasket	E.5927	1
5	Cut-out Switch	E.3969	1
5a	Rubber Tube for Cut-Out Switch	E4083	1
6	Spark Plug	E.3808	1
7	Washer for Spark Plug		
8	Piston	E.3513	1
9	Gudgeon Pin	E.3517	1
10	Wire Circlips	E.3518	2
11	Compression Ring	E.3514	1
12	Scraper Ring	E.3515	1
13	Oil Ring	E.3516	1
14	Cylinder Block	E.6891	1
15	Valve Seat Insert—Exhaust	E.3534	1
16	Exhaust Valve Guide	E.3532	1
17	Inlet Valve Guide	E.3533	1
18	Inlet Valve and Exhaust Valve	E.3526	2
19	Valve Spring Cotter Pin	E.3531	2
20	Inlet Valve Spring	E.3529	1
21	Exhaust Valve Spring	E.3528	1
22	Valve Spring Retainer	E.3968	2
24	Paper Gasket for Flywheel Magneto Backplate	E.3859	3
25	Camshaft Spindle	E.6789	1
27	Crankshaft	E.3524	1
28	Key for Magneto Flywheel	E.3597	1
29	Washer for Crankshaft	1N562A	1
30	Nut for Crankshaft (Left Hand Thread)	L.6076	1
32	Main Bearing	E.3536	2
33	Oil Seal	E.3813	2
34	Breather Baffle	E.3561	1
35	Drive Screw for Breather Baffle	E.3814	1
36	Tappets	E.3535	2
37	Camshaft	E.3510	1
38	Washer for Crankcase Breather	E.3594	1
39	Breather Body	E.3555	1
40	Disc Valve	E.3557	1
41	Breather Cap	E.3556	1
42	Breather Retainer Spring	E.3558	1
43	Stud for Valve Chest Cover	E.3544	1
44	Baffle for Valve Chest Cover	E.3560	1
45	Gasket for Valve Chest Cover	E.3549	1
46	Cover for Valve Chest	E.3543	1
47	Washer for Stud	1N560A	1
48	Nut for Stud	1N31A	1
49	Connecting Rod	E.3519	1
50	Big End Bearing Cap		
52	Locking Strip	E.3523	1
53	Screws for Big End Bearing Cap	1D585R	2
55	Paper Gasket for Sump	E.3547	1
56	Washer for Bolt—Asbestos	E.3749	1
57	Collar for Bolt	E.3566	1
58	Bolt for Sump	1A139A	1
59	Dowels for Sump	E.3819	2
60	Setscrew for Sump	1DO87A	1
61	Washer for Setscrew—Shakeproof	E.3821	1
62	Drain Plug	E.6893	1
62a	Filler Plug	E.6894	1

Ref. No.	Description	Part No.	No. per set
62b	Dip Stick for Filler Plug	E.6895	1
65	Screw for Cowl and Tank	3D270A	7
66	Washer for Cowl and Tank	3N560A	7
67	Grommet	See Magneto	1
68	Screw for Flywheel Magneto Backplate	1DO48A	4
68a	Screw for Magneto Stator Plate	3D048A	2
69	Washer for Flywheel Magneto Backplate	L.3844	4
69a	Washer for Screw for Magneto Stator Plate	3N560A	2
70	Cam—Contact Breaker	See	1
71	Flywheel	Magneto	1
72	Starter Pulley	E.3552	1
75	Pressed Steel Screw Cap	E.3589	1
76	Washer for Petrol Tap	E.4967	2
81	Inlet Manifold	E.3511	1
82	Stud for Throttle Lever	E.3565	1
83	Nut for Throttle Lever	L.6958	1
84	Washer for Throttle Lever	3N610A	1
86	Screw for Throttle Lever	3J512A	1
87	Gasket for Inlet Manifold	E.3551	1
88	Screw for Carburettor Assembly... ..	3J298A	2
88a	Screw for Inlet Manifold	3D298A	2
90	Carburettor	E.5416	1
91	Gasket for Carburettor	E.3550	1
93	Securing Clip for Air Cleaner	E.3581	1
94	Screw for Securing Clip	E.6078	1
95	Nut for Securing Clip	1N537A	1
96	Air Cleaner	E.6754	1
101	Exhaust Silencer	E.4000	1
102	Locknut for Exhaust Silencer	E.3568	1
103	Starter Rope with Knob (not illustrated)	E.3620	1
104	Elbow for Air Cleaner (not illustrated)	E.4136	1
105	Screw for Elbow (not illustrated)	E.6078/P	1
108	Petrol Banjo	See Carburettor	1
125	Washer for Inlet Manifold & Carburettor Assy.	L.6865/P	4
141	Oil Splasher	E.3522	1
144	Sump	E.6974	1
147	Flywheel Magneto Backplate	E.6533	1
149	Cowl	E.6537	1
151	Petrol Tank	E.6756	1
152	Petrol Tap Body	E.6596	1
153	Petrol Control Button	E.6597	1
154	Screw for Petrol Tap	E.6598	1
155	Nut for Tank Fixing Screw	L.6961	3
157	Throttle Lever incorporating Anchor and Washer	E.6755	1
159	Governor Blade	E.6529	1
160	Governor Blade Spindle	E.6528	1
161	Throttle Link	E.6752	1
162	Governor Spring	E.6536	1
163	Throttle Return Spring	E.6531	1
170	Studs for Cylinder Head	E.6619	2
171	Nuts for Cylinder Head Studs	3N45A	2
175	Petrol Tube	E.5309	1
180	Paper Gasket for Drain Plug (not illustrated)	E.6897	1
181	Paper Gasket for Filler Plug (not illustrated)	E.6898	1

INSTRUCTIONS FOR ORDERING SPARE PARTS

It is essential to quote the following.

- (a) The Model Name of the machine.
- (b) The chassis serial number stamped on the R.H. side plate. (*See mower assembly illustration*).
- (c) The engine serial number. (*See engine assembly illustration*.)
- (d) The PART NO. of the part, NOT the illustration No.

SPARE PARTS LIST FOR ZENITH CARBURETTER.
TYPE 13.TCA. C1433C.

Ref. No.	Description.	Part No.
1.	Plug for Petrol Banjo	013891
2.	Washer for Ref. No. 1...	11007
3.	Filter Gauze	013893
4.	Washer for Ref. No. 1...	11007
5.	Throttle Stop Screw	015547
6.	Spring for Ref. No. 5	08539
7.	Nut fixing Throttle Lever	P-16639
8.	Spring Washer for Ref. No. 7	04692
9.	Throttle Lever	015824
10.	Screw fixing Bowl to Barrel (2 off)	07967
11.	Spring Washer for Ref. No. 10 (2 off)	015536
12.	Carburetter Barrel (assembled with Throttle, Throttle Spindle, Throttle Lever and Tickler)	017075
13.	Washer for Needle Seating	08523
14.	Needle and Seating	016465
15.	Gasket (Bowl to Barrel)	015532
16.	Float and Needle Assembly	016620
17.	Washer for Adjustment Needle	16709
18.	Spring for Adjustment Needle	09846
19.	Adjustment Needle	013637
20.	Strangler Spindle	015530
21.	Strangler Flap	013635
22.	Split Pin fixing Ref. No. 21	05370
23.	Friction Spring	013650
24.	Retaining Washer for Ref. No. 23	08860
25.	Split Pin	05370
26.	Carburetter Bowl	017042
27.	Slow Running Tube	015461
28.	Split Pin for Tickler	05890
29.	Spring for Air-regulating Screw	015458
30.	Spring for Tickler	015454
31.	Air-regulating Screw	015457
32.	Tickler Stem	016469
33.	Petrol Banjo (not illustrated)	E.5417

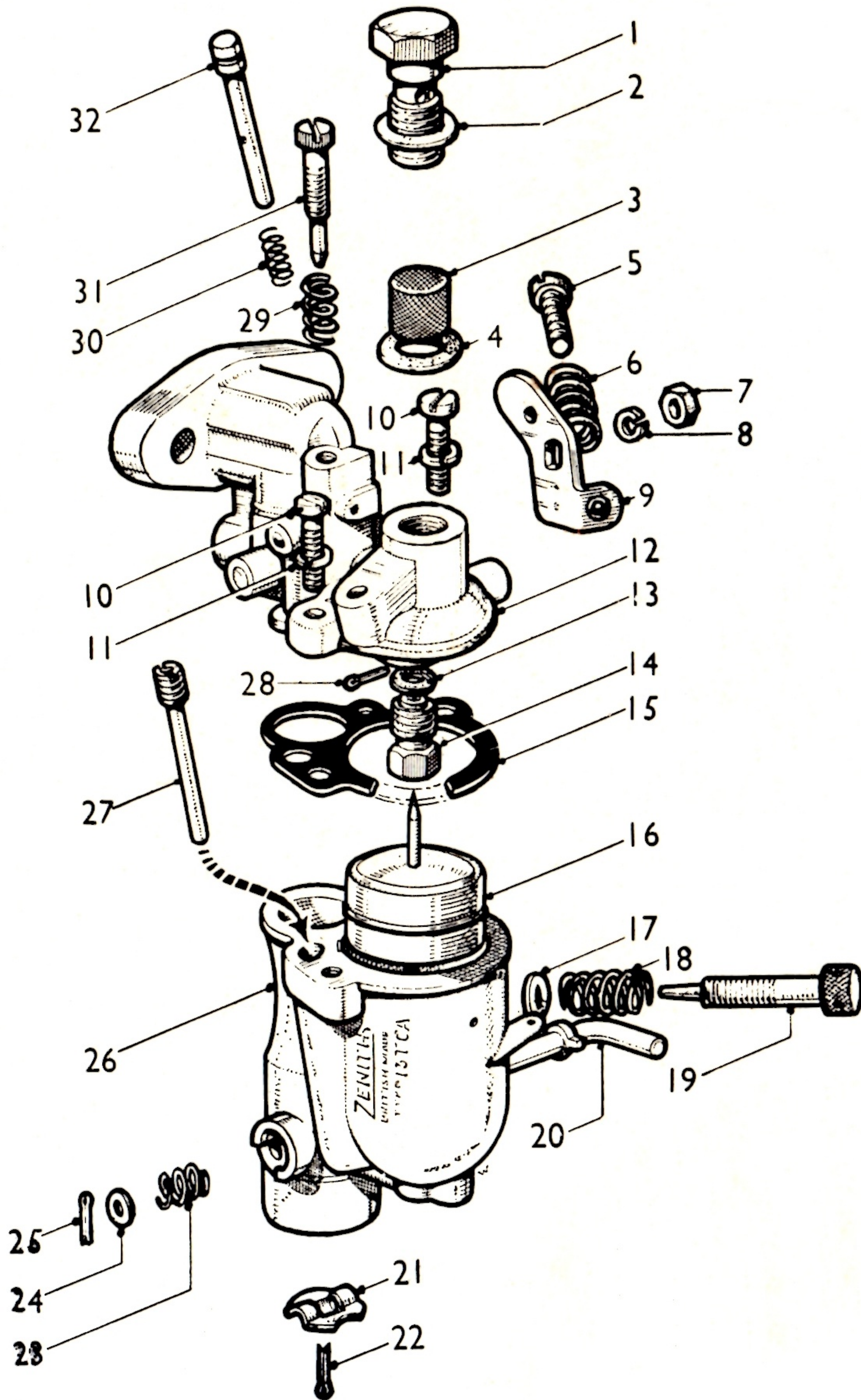
This list to be read in conjunction with
EXPLODED ILLUSTRATION OF CARBURETTER on Page 25

INSTRUCTIONS FOR ORDERING SPARE PARTS

It is essential to quote the following.

- (a) The Model Name of the machine.
- (b) The chassis serial number stamped on the R.H. side plate.. (*See mower assembly illustration*).
- (c) The engine serial number. (*See engine assembly illustration*).
- (d) The PART NO. of the part, NOT the illustration No.

Carburettor Illustration



MAGNETO SPARE PARTS LIST.

Ref. No.	Description	Part No.	No. per Set
1.	Flywheel	E.5010	1
2.	Clip for Condenser	E.5013	1
3.	Adjuster Plate	E.5014	1
4.	Inspection Cover	E.5019	1
5.	Eccentric Rivet. (Not illustrated)	E.5020	1
6.	Screw for Condenser Clip	E.5021	2
7.	Breaker Arm and Contact	E.5799	1
8.	Contact Point and Bolt	E.5026	1
9.	Nut for Contact Point and Bolt	1N471A	1
10.	Washer for Contact Point and Bolt	1N611A	2
11.	Screw, locking Adjusting Plate	1K007A	1
12.	Washer for Screw, locking Adjusting Plate	1N610A	1
13.	Spring Retainer	E.5032	1
14.	Breaker Spring	E.5033	1
15.	Washer	E.5034	2
17.	Condenser	E.5037	1
18.	Cam Sleeve... ..	E.5038	1
19.	Coil	E.5039	1
20.	Screw for Inspection Cover	E.5041	2
21.	Washer for Inspection Cover & Item 8	E.5042	3
22.	Pad—Lubricating	E.5047	1
23.	Lead—High Tension	E.5049	1
23A.	Suppressor (not illustrated)	E.5521	1
24.	Grommet—Rubber	E.5051	1
25.	Cam Spring	E.5052	1
26.	Stator Assembly	E.5053	1
29.	Spring Washer for Item 11 (not illustrated)	E.5043	1

This list to be read in conjunction with
MAGNETO ASSEMBLY ILLUSTRATION on Page 27

INSTRUCTIONS FOR ORDERING SPARE PARTS

It is essential to quote the following :

- (a) The Model Name of the machine.
- (b) The chassis serial number stamped on the R.H. side plate. (*See mower assembly illustration*).
- (c) The engine serial number. (*See Engine Assembly Illustration*).
- (d) The PART NO. of the part, NOT the illustration No.

Magneto Assembly Illustration

